



CALIFORNIA DYNAMICS CORPORATION  
 5572 ALHAMBRA AVE.  
 LOS ANGELES, CA. 90032-3106

CALL US - TO SET THINGS RIGHT  
 FAX (323) 223 - 7941  
 PH (323) 223 - 3882  
 email: caldyn@earthlink.net

TYPE CH

1" SPRING HANGER

FILE 361

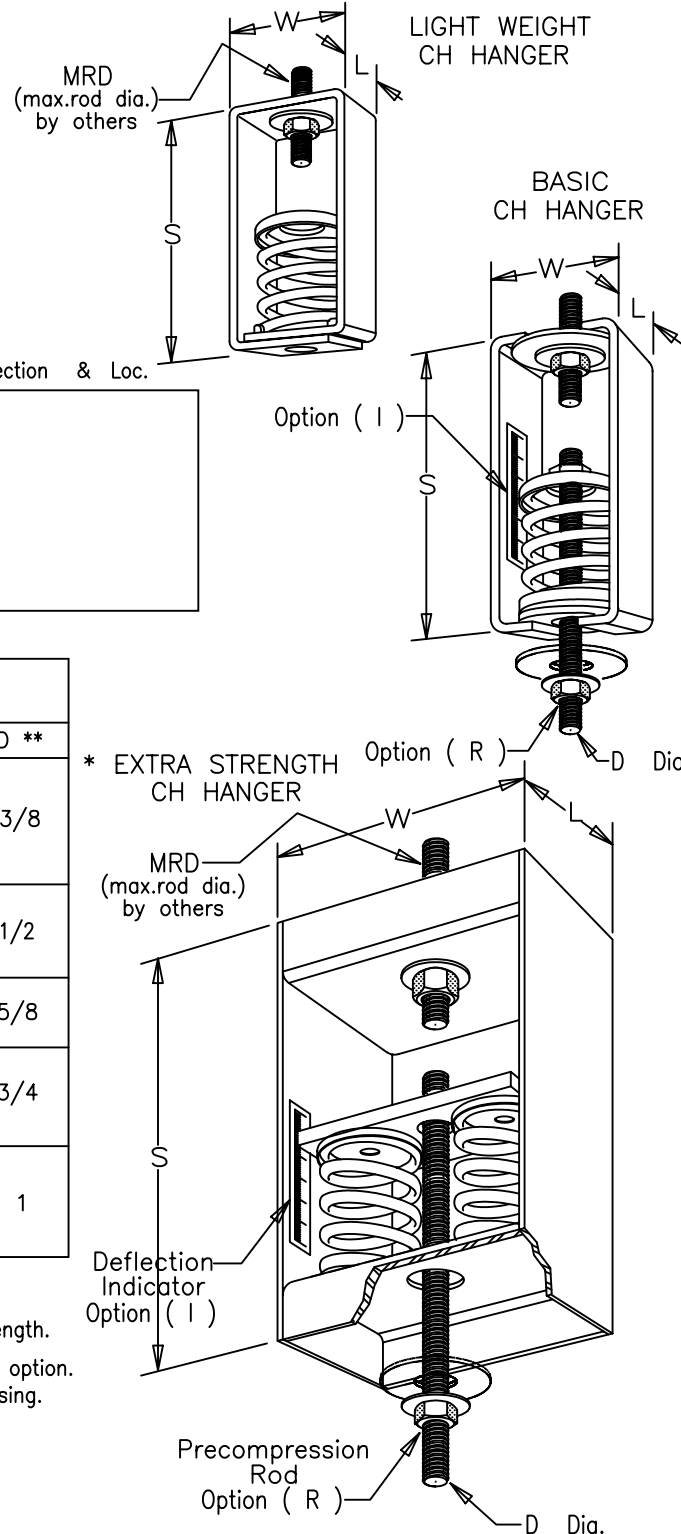
10/06/02

JOB: \_\_\_\_\_  
 CUST: \_\_\_\_\_  
 ENG'R: \_\_\_\_\_  
 TAG: \_\_\_\_\_

DEF'L: 1"

DATE: \_\_\_\_\_


Isolator Selection & Loc.



HANGER NO. Max. Load	RATED DEFL.	DIMENSIONS (inches)				
		W	L	S	MRD	D **
(lbs)	(in)					
E 21	1					
E 55	1					3/8
E 79	1					
E 106	1					
E 143	1	2-3/4	2-1/2	4-3/4	3/4	1/2
E 187	1					
E 244	1					
E 318	1					
E 415	1					5/8
E 500	1	3-1/4	2-3/4	7-1/2		3/4
715	1					
1060	1					
1430 *	1	6-3/8	4	10	1	1
2120 *	1					
2860 *	1	6-3/8	4	11		

(SEE SELECTION TABLE ON BACK SIDE)

- \* The housings of these units are specially reinforced for extra strength.
- \*\* The precompression rod is furnished with units which have the "R" option. This rod will extend about 3" below the bottom of the hanger housing.

TYPICAL CALLOUT : CH - R I - E 106  
 (Type) - (Options) - (Size)